

# FPIC in the Boreal



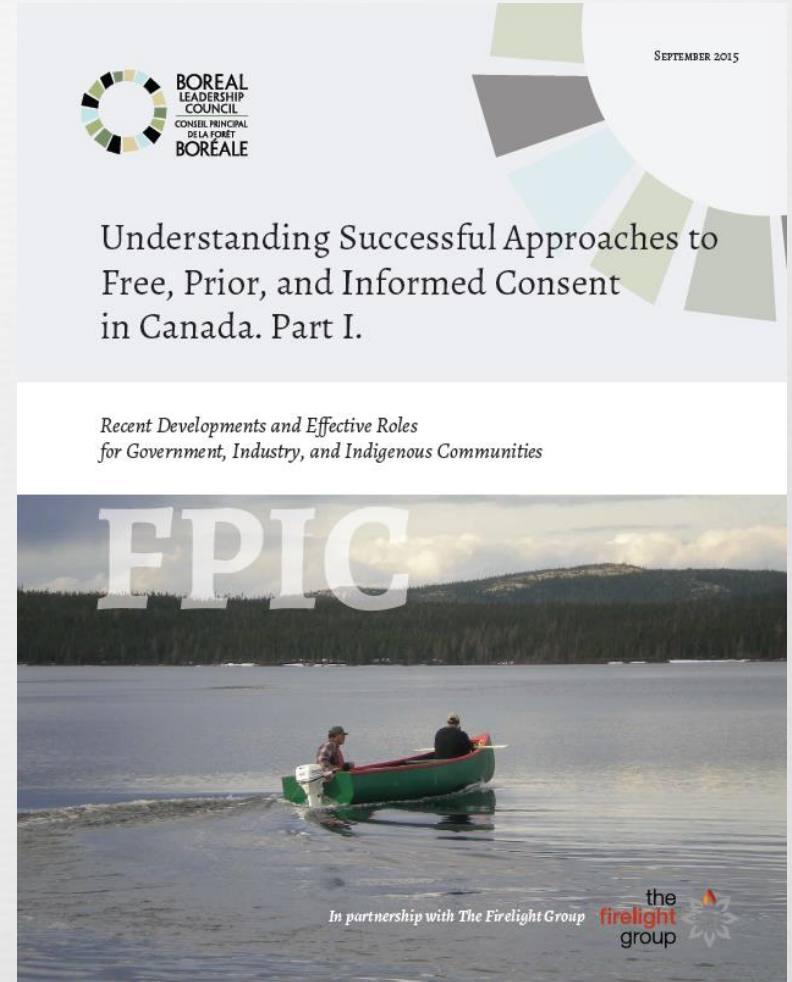
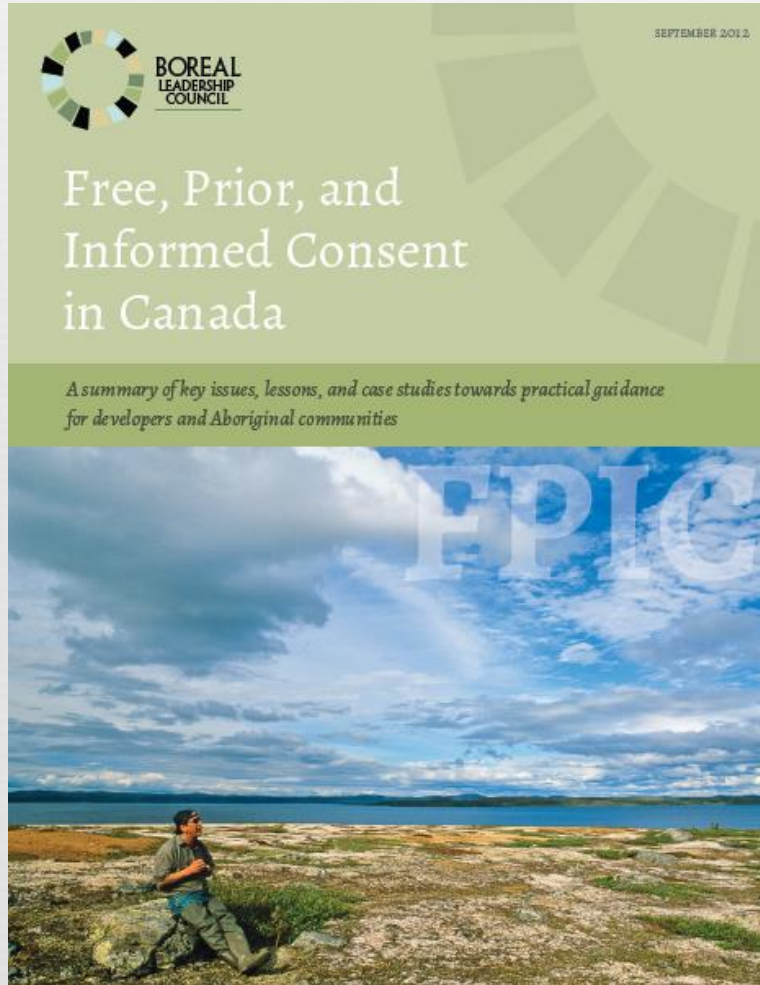
Forest Stewardship & FPIC: Our Doorway to Prosperity  
Sheraton, Ottawa  
April 13<sup>th</sup> 2016

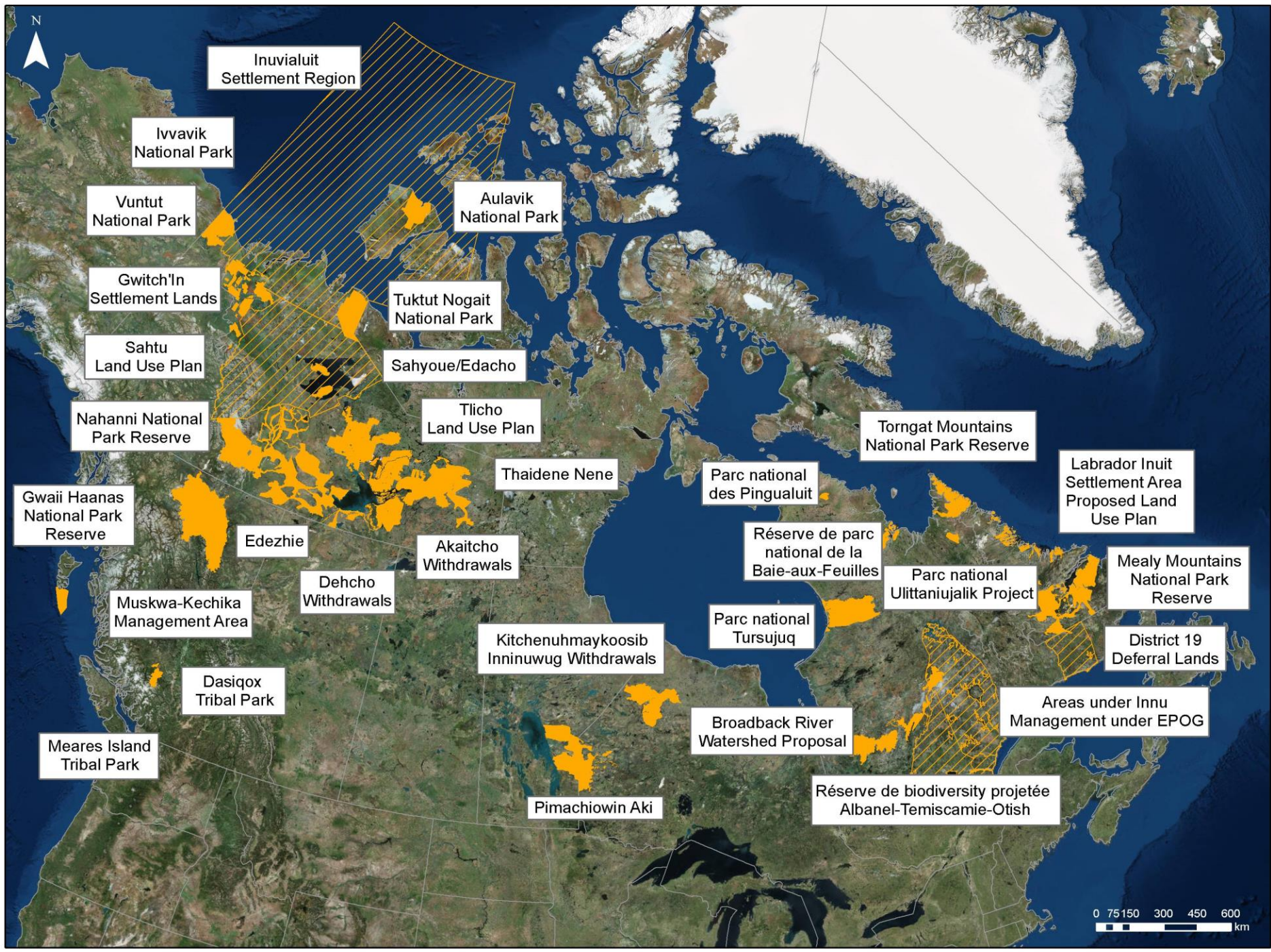
Valérie Courtois, RPF  
Director, Indigenous Leadership Initiative  
International Boreal Conservation Campaign

# The Indigenous Leadership Initiative

- ❧ A part of the International Boreal Conservation Campaign, the ILI's goal is to strengthen and support Indigenous nationhood by working to support innovative and leading management of our relationships with lands.

# Boreal Leadership Council







**FNWARM**

FIRST NATIONS WOMEN ADVOCATING RESPONSIBLE MINING

# The Ungava Peninsula Caribou Aboriginal Round Table

- ☞ Membership:
  - ☞ Innu Nation
  - ☞ Nunatsiavut Government
  - ☞ NunatuKavut Community Council
  - ☞ Innu from the Québec region
  - ☞ Naskapi Nation of Kawawachikamach
  - ☞ Makivik Corporation
  - ☞ Cree Nation Government
  
- ☞ Complexity of collaboration, but complete dedication to reaching solutions





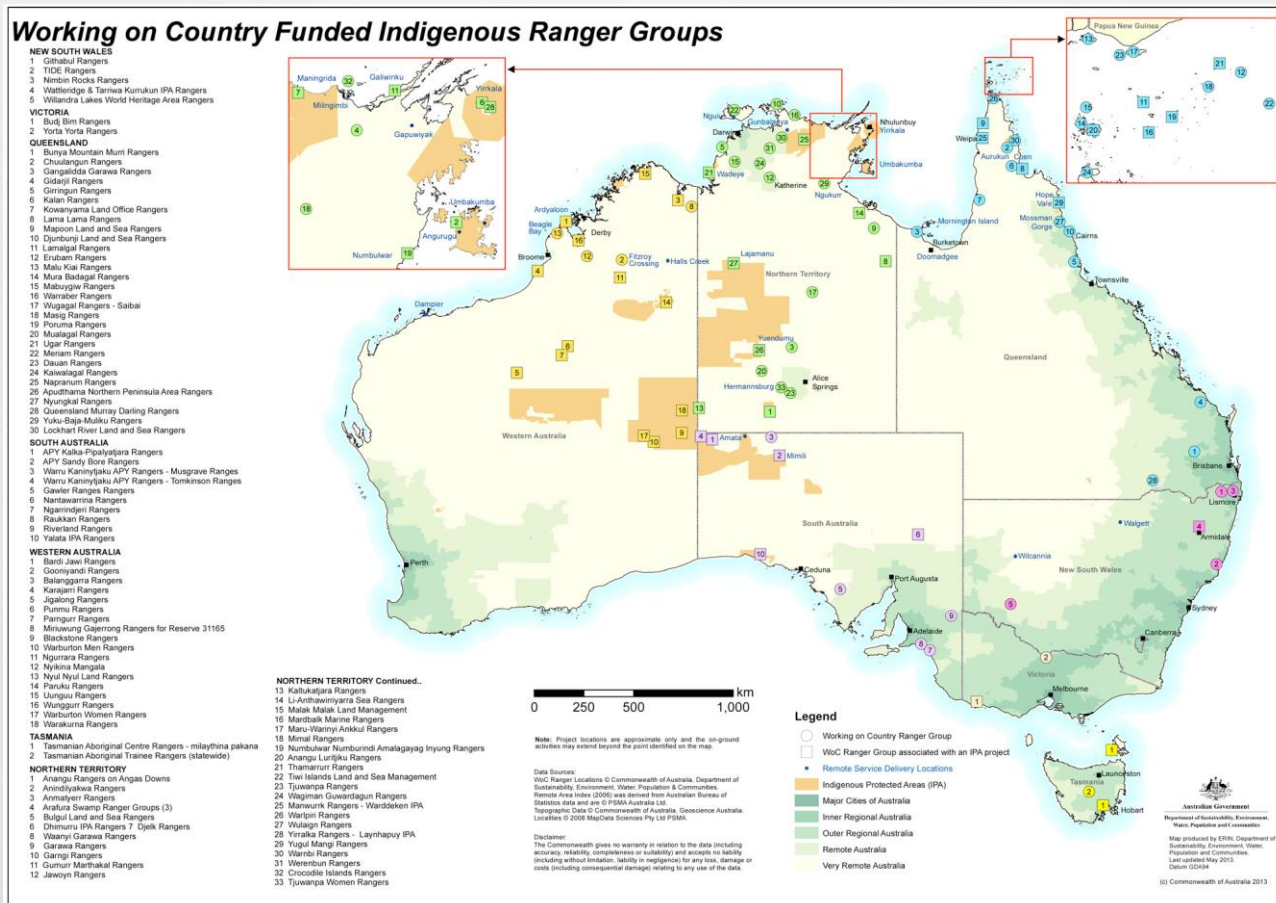








# Australia's Rangers – Working on Country Program



# Impact of program

## ☞ Social

### ☞ Increased levels of education

- ☞ Leaders, guardians and general community (training involving extended families)
- ☞ Inspiration for a very young population

### ☞ Improvement of social conditions in community

- ☞ Employment
- ☞ Pride in identity and usefulness of “traditional skills” and Indigenous science and knowledge
  - ☞ Valuing skills and knowledge that are related to cultural pride
- ☞ Reduction of rates of violence
- ☞ Reduction of incarceration rates

### ☞ Improvement of economic conditions

- ☞ Employment
- ☞ Meaningful engagement in projects on traditional lands
- ☞ Ability to engage with more depth with proponents, leading to an improvement of understanding of the conditions needed for consent by proponents and other governments

# Impact of program

- ☞ Lands management
  - ☞ Increase in capacity to engage on proposals at multiple levels, including technical
  - ☞ Reinforces the value of the engagement process with other governments and Industry – certainty, stability
  - ☞ Actual on-the-ground protection – ensuring ecological and cultural integrity
- ☞ Planning
  - ☞ Increases capacity for both internal process and external relations (consultation, field visits, meetings with proponents, etc)
  - ☞ Increased capacity for FNs-led design, based on FN values
- ☞ Research and monitoring
  - ☞ Ability for FNs to generate their own data and incorporate it in the community's decision-making process
    - ☞ Ex: Innu Nation Boreal Climate Change Monitoring project
  - ☞ Conduit for engagement on research (academics, NGOs, etc)
- ☞ Long term vision that allows for success beyond the designations or boundaries on a map

# Tshinishkumitinau!

Valérie Courtois, RPF  
vcourtois@borealcanada.ca

